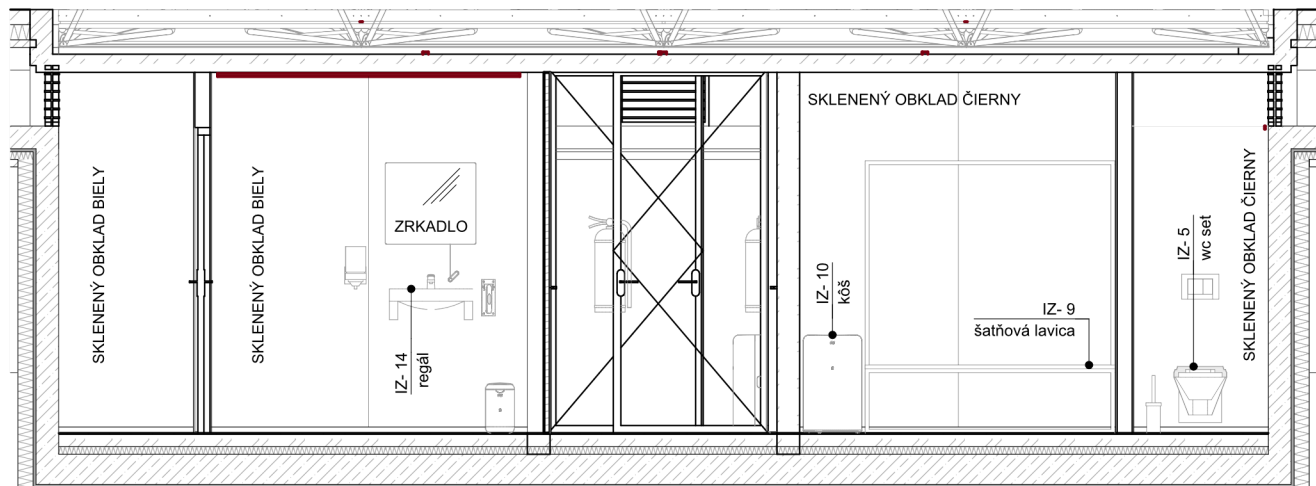
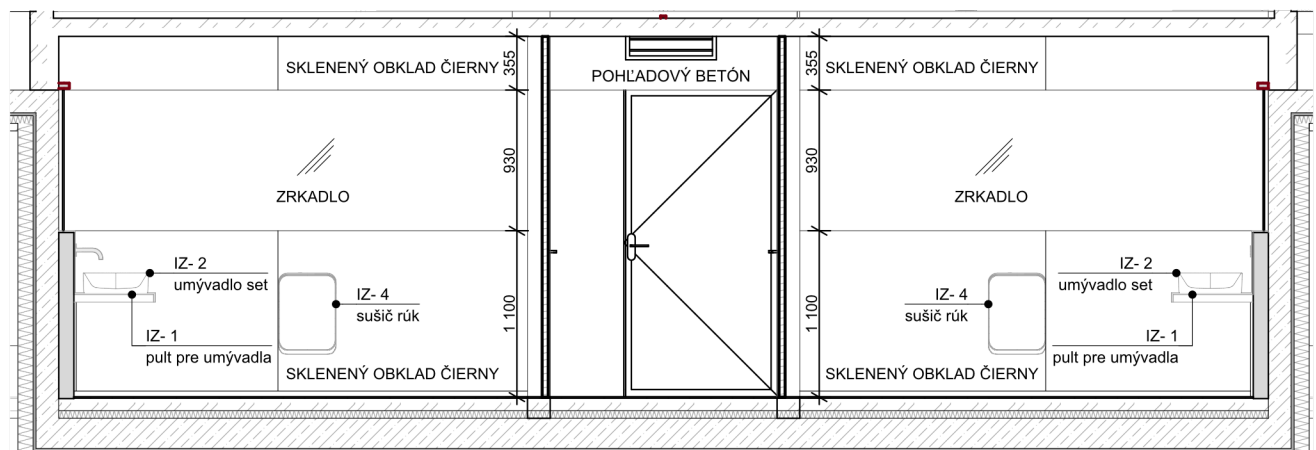


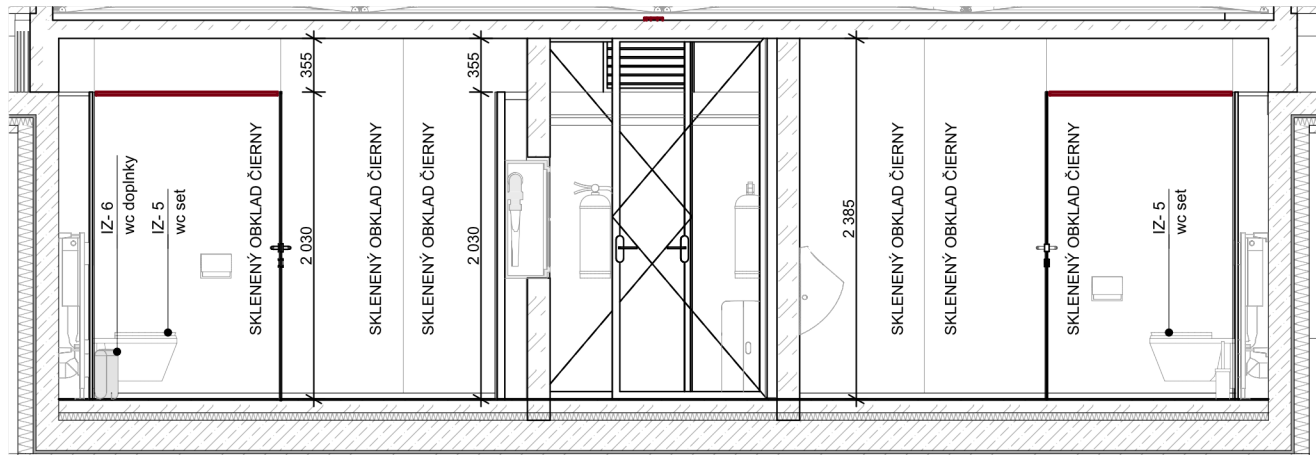
IP- 5



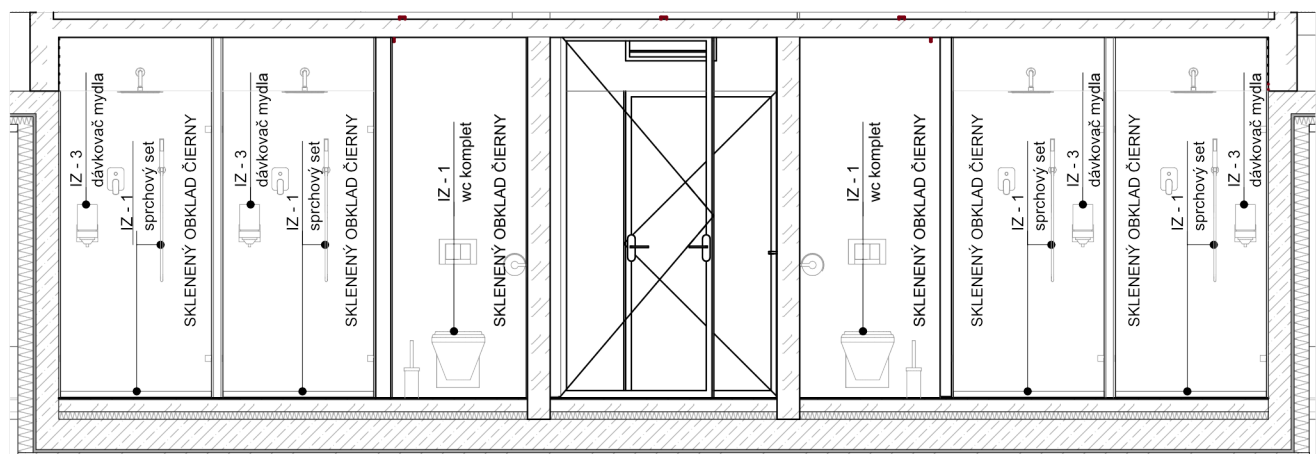
IP- 6



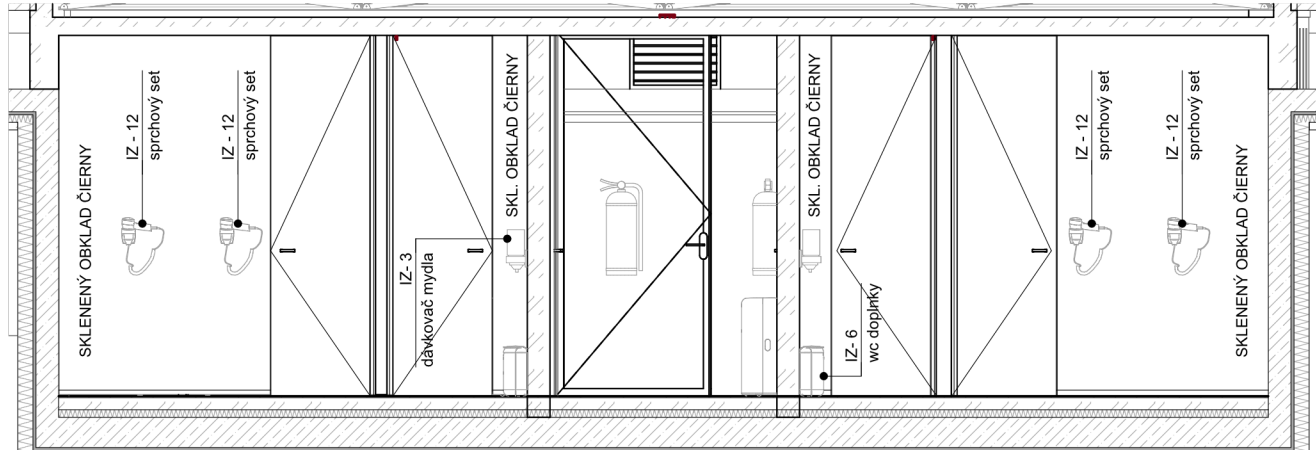
IP- 7



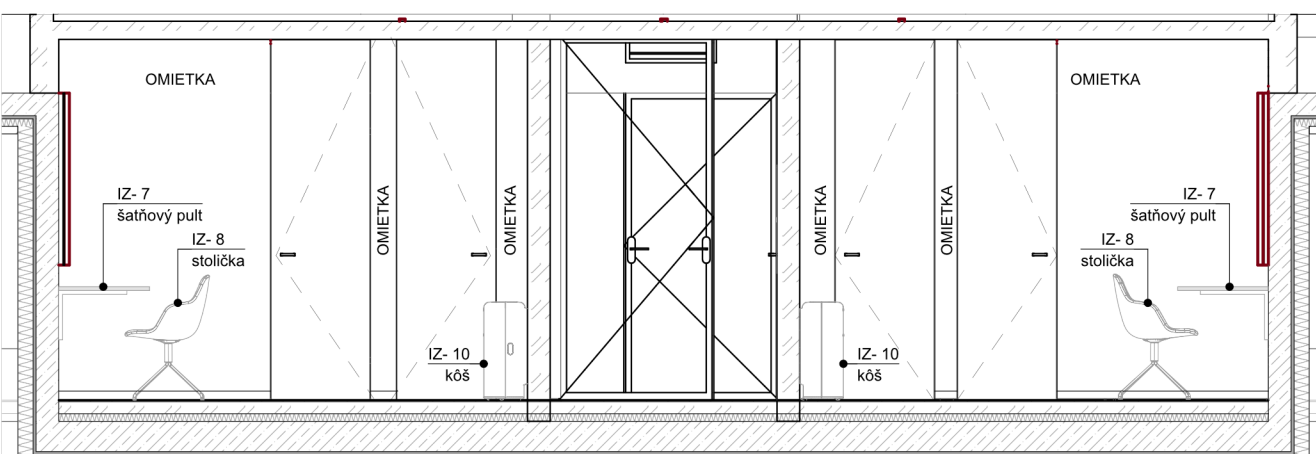
IP- 8



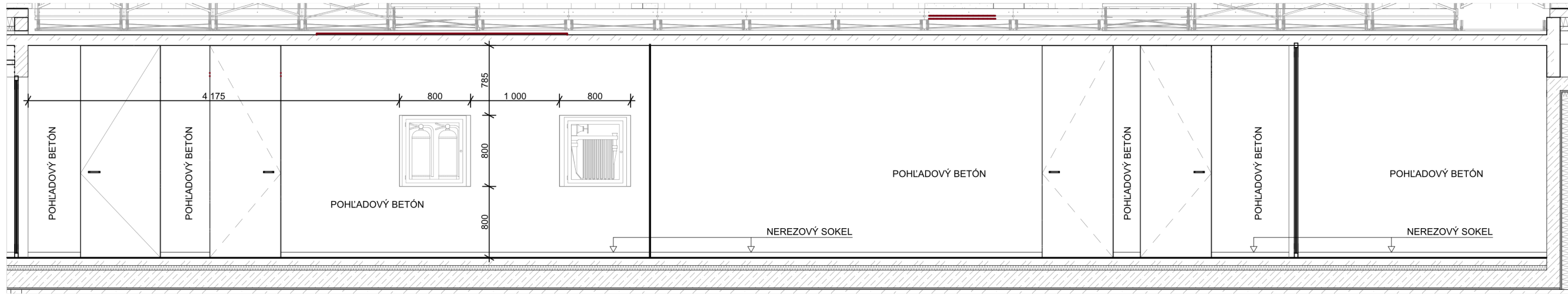
IP- 9



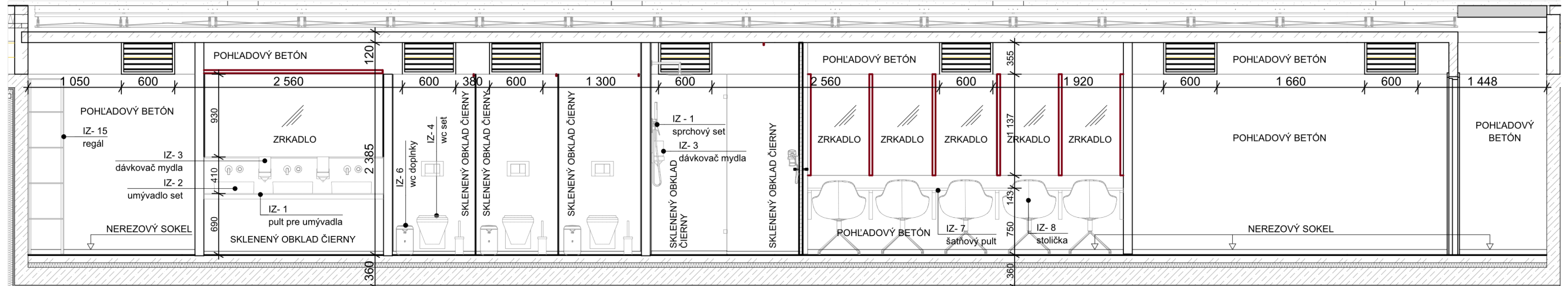
IP- 10



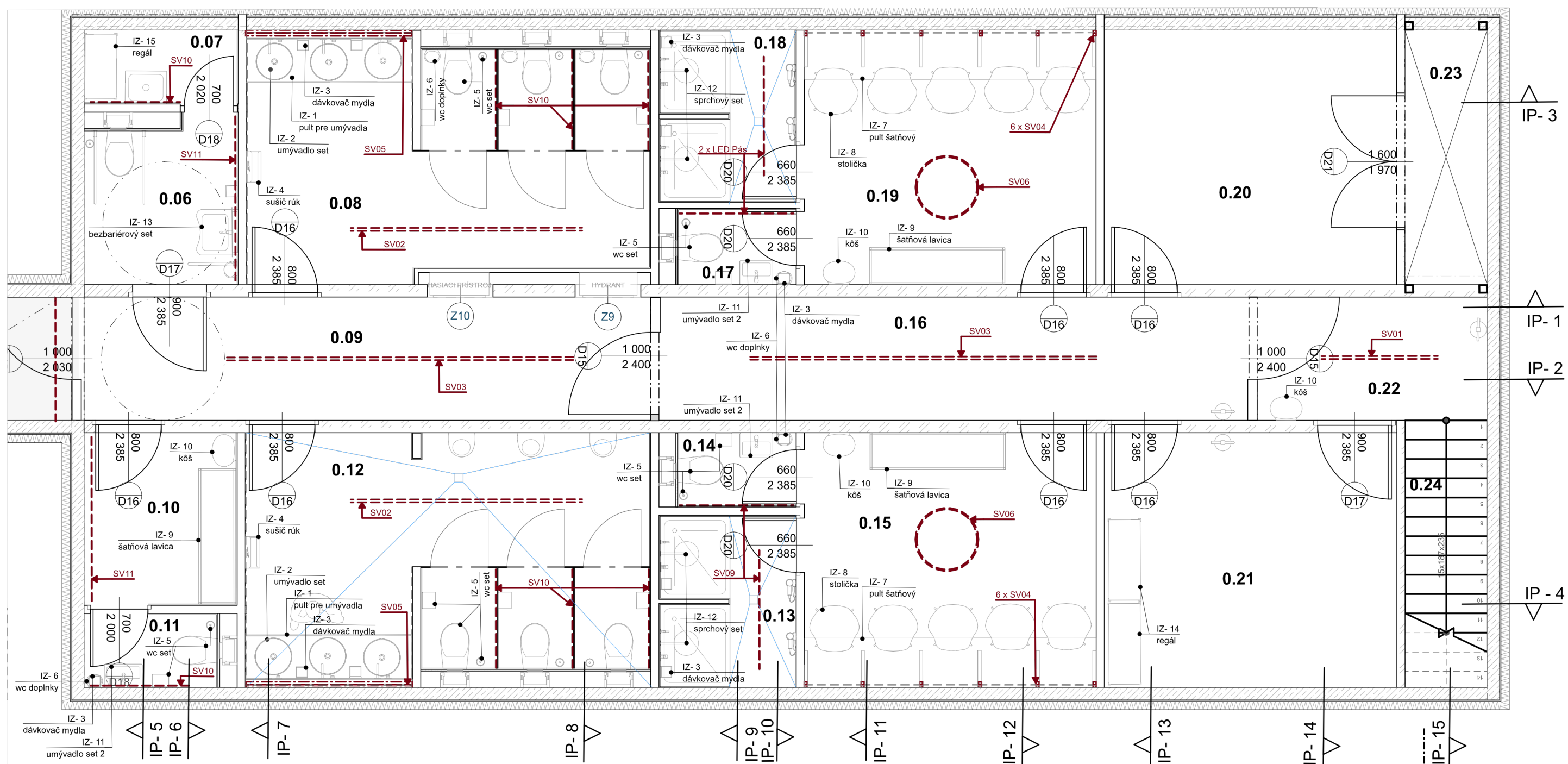
IP- 11



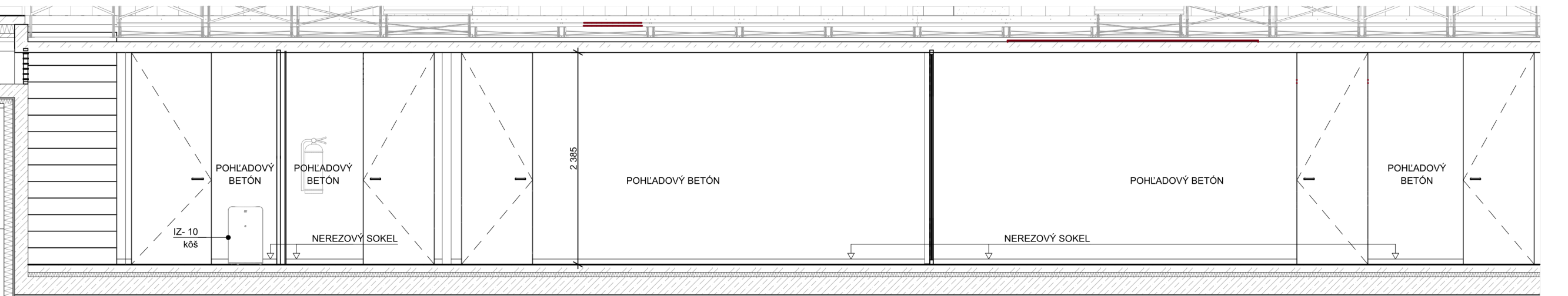
IP- 1



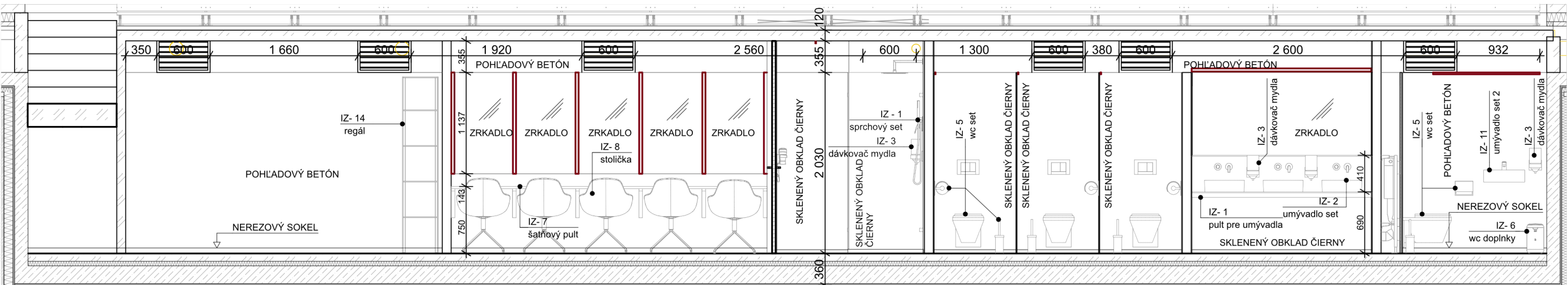
IP- 3



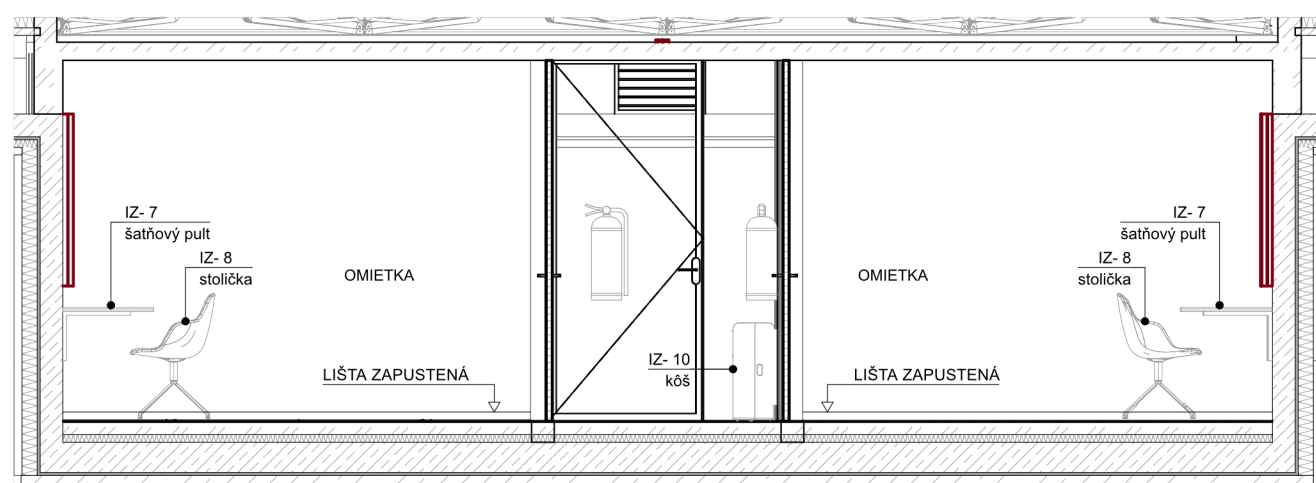
PODORYS 1. PP



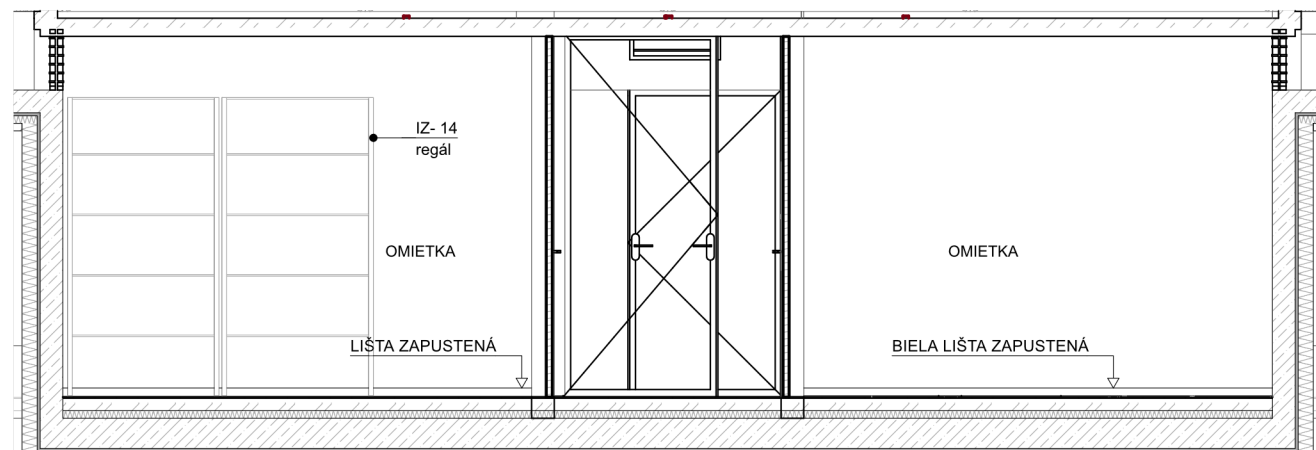
IP- 2



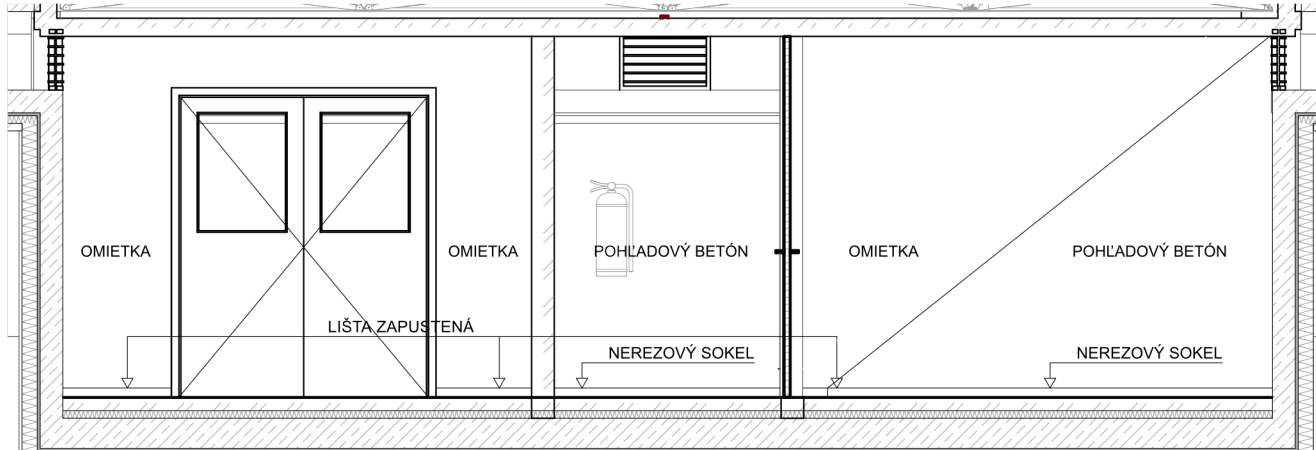
IP- 4



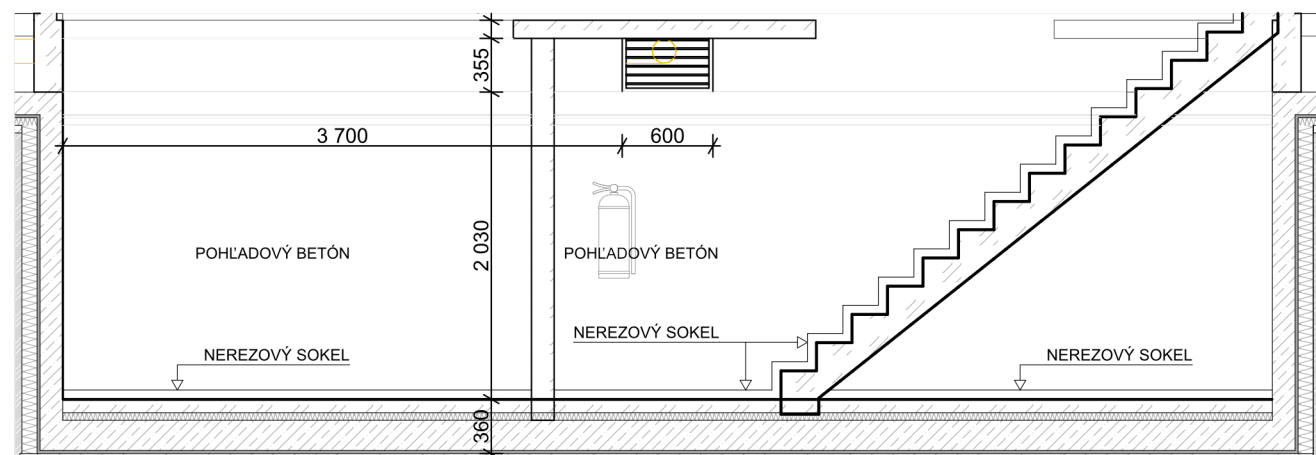
IP- 12



IP- 13



IP- 14



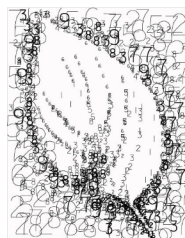
IP- 15

+0,000=141,15 m n.m. BpVšúradnicový systém S-JTSK

Stavba: **Kreatívne centrum Nitra - Kino Palace**

Investor:
Mesto Nitra
Štefánikova trieda 60
950 06 Nitra
www.nitra.sk
info@nitra.sk
+421 3765 02 111

Generálny projektant:
Livinark s. r. o.
Na hore 1724/5
040 22 Košice
www.livinark.sk
livinark@gmail.com
+421 907 258 707



Autori:
Tomas Boroš
Maroš Mitro
Dominika Jenčová
Martina Hončárová
Pavel Bakajsa
Branislav Ivan
HIP:
Ing.arch. Branislav Ivan

Miesto:
Radlinského 108 / 9, 949 01 Nitra = 48.312177, 18.088820

Dátum:
December 2019

Profesia: **PROJEKT INTERIÉRU**

Zodp. projektant:
Ing.arch. Branislav Ivan

Vypracoval:
Ing.arch. Tomáš Boroš, ArtD.

Objekt: **SO 01**

Obsah výkresu: **Zázemie 1.PP**

Dátum tlače:
Stupeň: **DSP + DRS**
Formát:

Mierka: **1:50**
Paré:

Č. výkresu:

A.1